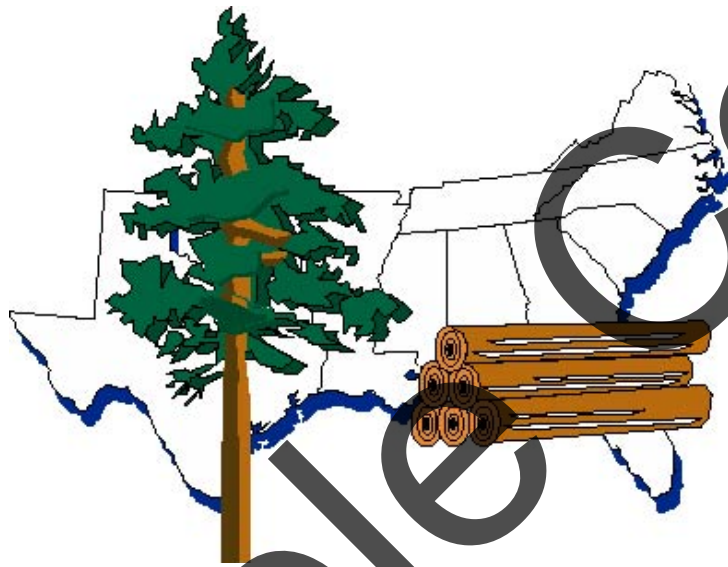


2nd Quarter 2018

TimberMart-South



Logging Rates Report

In this issue of the Logging Rates Report:

Cut & Load Contract Rates

Hauling Rates

Diesel Fuel Rates

Publisher: Tom Harris

Senior Research Editor: Jacek Siry, Ph.D.

Research Editor: Harrison Hood, Ph.D.

News Editor: Sara Baldwin

Price Editor: Jonathan Smith

Staff Editor: Matt Gaw

Administrative Coordinator: Cathy Law

Research Assistants: Graduate Students

For general inquiries and subscription rates –

- Phone: (706)247-7660 • Fax: (706)389-9196
- E-mail: tmart@timbermart-south.com • Web address: www.timbermart-south.com
- Mailing address: TimberMart-South, 1860 Barnett Shoals Road, PMB 103-598, Athens, GA 30605

TimberMart-South Copyright © 2018

This publication is copyrighted under the statutes of the United States. The compilation of facts and information herein contained are the subject of private property rights of the publisher.

- Reproduction, either manually or electronically, in whole or in part, without express permission of the owner or other unauthorized use, is not permitted.
- Redistribution, either manually or electronically, in whole or in part, without express permission of the owner or other unauthorized use, is not permitted.
- Reproduction and/or redistribution of this publication, in whole or in part, violates US copyright law and is punishable by statutory damages of up to \$150,000, plus attorney's fees.
- Reproduction and/or redistribution include copying, online sharing, faxing, or emailing between individuals within or outside your company.
- For permission requests, email detailed request to tmart@timbermart-south.com with "Permission Request" in subject line.

Publisher provides the information herein as a convenience to its readers. Publisher does not represent or endorse the truth, accuracy, reliability or completeness of any of the information contained in this publication. Publisher provides the information in this newsletter on an 'as is' and 'as available' basis, with no warranties whatsoever. Those who use prices published herein for a specific purpose, sale or contract do so at their own risk. Under no circumstance will publisher have any liability for any loss or damage whatever caused by any reader's reliance on information obtained through this newsletter.

SOUTH-WIDE LOGGING RATES

2nd Quarter 2018

Cut and Load Contract Rates (\$/ton)						
Harvest Type	Piedmont			Coastal Plain		
	Lo	Hi	Mean	Lo	Hi	Mean
Final Harvest	10.97	15.47	13.22	9.70	13.00	11.35
Plantation thin	11.01	15.12	13.06	10.33	14.78	12.56
Natural Thin	11.13	15.68	13.40	10.92	14.92	12.92
Swamp				15.55	19.35	17.45

Range of Cut and Load data for all harvest types and regions was \$8.00 to \$21.50 per ton.

Hauling Rates & Distances	
Average Minimum Haul Distance (miles)	40
Minimum Haul Rate (\$/ton/loaded mile)	\$0.12
Incremental Haul Rate (\$/ton/loaded mile)	\$0.13
Average Haul Distance (miles)	66

Diesel Fuel Price	
Off road (US\$/gallon)	\$2.50
Highway (US\$/gallon)	\$2.78
Average Gulf Coast No. 2 Diesel Retail Sales by All Sellers-Jun. 2018(EIA)	\$3.02

HI,LO- Observations were divided into high and low categories, and each category was averaged

Cut and Load Rate- Amount paid to harvest timber and load it on a truck. Does not include hauling costs, dealer costs, or commissions.

Final Harvest Logging- Typical regeneration harvest on good ground and harvests preparing for land use change including clearcuts, seedtree harvests and real estate cuts. Harvesting equipment includes a three- or four-wheeled harvester and skidders with normal tires.

Minimum Haul Distance- Longest haul for which the fixed base rate (minimum haul rate) is paid. Longer hauls are paid on an incremental basis. This is NOT the distance to the mill from the closest harvest tract,

Plantation Thin- Typical 1st or 2nd pine plantation thinning.

Natural Thin- Typical 1st or 2nd natural timber stand thinning.

Swamp Logging- Harvests using track harvesting and skidders with oversized or dual tires; also referred to as bottom-land logging in some areas.

Sample Copy

