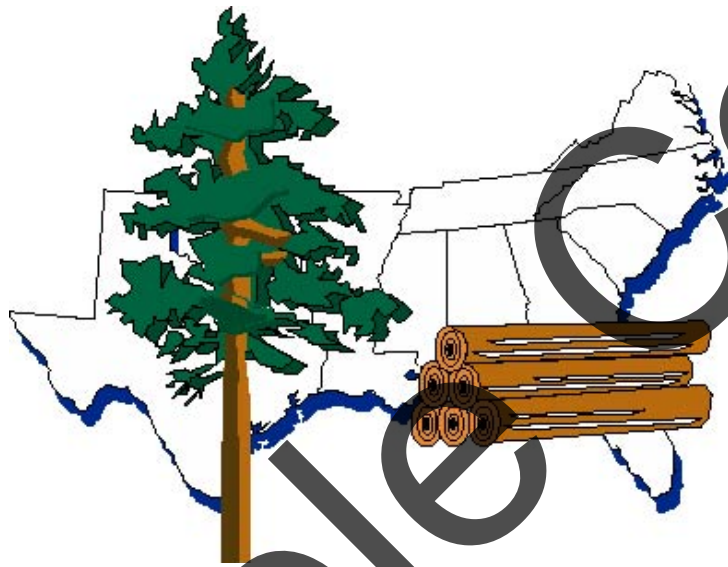


2nd Quarter 2018

TimberMart-South



Biomass & Residuals Report

In this issue of the Biomass & Residuals Report:

Pulp Quality Chips

Biomass Fuel

Process Residuals

Publisher: Tom Harris

Senior Research Editor: Jacek Siry, Ph.D.

Research Editor: Harrison Hood, Ph.D.

News Editor: Sara Baldwin

Price Editor: Jonathan Smith

Staff Editor: Matt Gaw

Administrative Coordinator: Cathy Law

Research Assistants: Graduate Students

For general inquiries and subscription rates –

- Phone: (706)247-7660 • Fax: (706)389-9196
- E-mail: tmart@timbermart-south.com • Web address: www.TimberMart-South.com
- Mailing address: TimberMart-South, 1860 Barnett Shoals Road, PMB 103-598, Athens, GA 30605

TimberMart-South Copyright © 2018

This publication is copyrighted under the statutes of the United States. The compilation of facts and information herein contained are the subject of private property rights of the publisher.

- Reproduction, either manually or electronically, in whole or in part, without express permission of the owner or other unauthorized use, is not permitted.
- Redistribution, either manually or electronically, in whole or in part, without express permission of the owner or other unauthorized use, is not permitted.
- Reproduction and/or redistribution of this publication, in whole or in part, violates US copyright law and is punishable by statutory damages of up to \$150,000, plus attorney's fees.
- Reproduction and/or redistribution include copying, online sharing, faxing, or emailing between individuals within or outside your company.
- For permission requests, email detailed request to tmart@timbermart-south.com with "Permission Request" in subject line.

Publisher provides the information herein as a convenience to its readers. Publisher does not represent or endorse the truth, accuracy, reliability or completeness of any of the information contained in this publication. Publisher provides the information in this newsletter on an 'as is' and 'as available' basis, with no warranties whatsoever. Those who use prices published herein for a specific purpose, sale or contract do so at their own risk. Under no circumstance will publisher have any liability for any loss or damage whatever caused by any reader's reliance on information obtained through this newsletter.

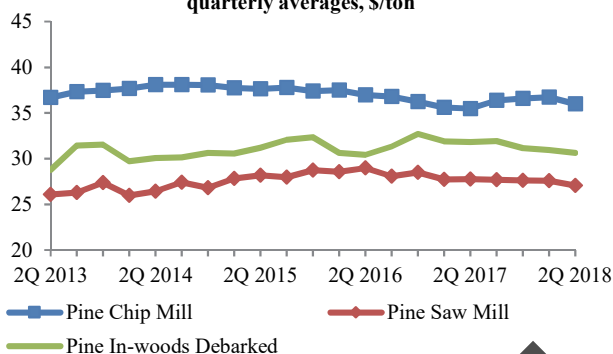
PULP CHIP & BIOMASS PRICES

2nd Quarter 2018

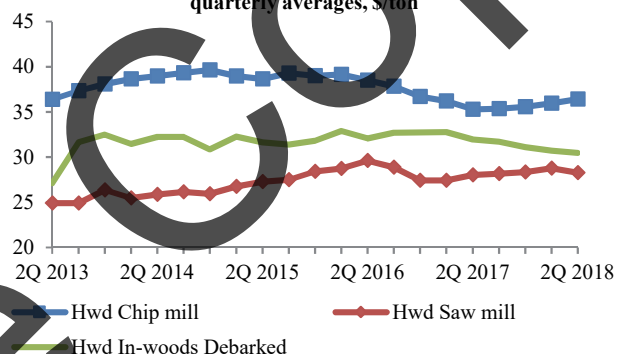
Pulp Quality Chips (\$/green ton)

South-wide	Pine			Hardwood		
	Lo	Hi	Avg	Lo	Hi	Avg
Saw Mills	24.04	30.06	27.05	24.41	32.14	28.27
Chip Mills	33.24	38.73	35.98	32.92	39.92	36.42
In-woods Debarked Chips	24.00	37.28	30.64	25.30	35.60	30.45

South-wide Pine Pulp Chip Prices
quarterly averages, \$/ton



South-wide Hardwood Pulp Chip Prices
quarterly averages, \$/ton



Biomass & Residuals (\$/green ton)

South-wide	Pine			Hardwood		
	Lo	Hi	Avg	Lo	Hi	Avg
In-woods Whole Tree Chips	19.63	22.29	20.96	20.03	23.04	21.53
Process Residuals (Sawdust & Bark)	15.90	23.95	19.93	13.39	25.88	19.64
Mixed Species						
HOG Fuel	14.63	20.01	17.32			
Planer Shavings	24.59	40.64	32.62			

Pulp Quality Chips are FOB Woods (Point of Production)

Biomass and Residuals are FOB Mill/Woods (Point of Production)

*Fuel quality chips generally from tops, limbs, limited bole material, and otherwise pre-commercial material.

**Process residuals include sawdust, bark and trimmings. Pulp quality sawmill residual chips are reported in the standard Timber Mart-South price reports. These are not absolute lows or highs; but an average of lows and an average of highs.

Sample Copy

Timber Mart-South Area Divisions

